



# EUROCLASS A1 NON-COMBUSTIBLE 10MM BOARD

## TECHNICAL DATA-SHEET - 2440mm x 1220mm

Meyer Firesure is a A1 Non-Combustible Magnesium Oxide board which is dual faced for different applications, firesure achieves Euroclass A1 Non-Combustible rating and is manufactured using inorganic substances and alkaline resistant mesh. The board is naturally cured which ensures a relatively low impact on the environment.



Property	Unit/Test	Firesure MgO Value
Thickness	mm	10
Dimensions	mm	2440 x 1220
Bending strength	N/mm <sup>2</sup>	18
Density	Kg/m <sup>3</sup>	1,100
Thermal conductivity	W/(mK)	0.19
Combustibility	EN13501	Non combustible
Thermal linear expansion coefficient	%	0%
Facial surface hardness	N/mm <sup>2</sup>	6
Moisture content normal conditions	%	< 8%
Nail pull strength from face	N/mm	6

### Firesure Benefits



Fire classification: EN13501 Euroclass A1, Non-Combustible. \*1



Easy to use, cut, work, and fix.



High Strength.



Unaffected by moisture content and will not deteriorate, expand or contract even with prolonged exposure.



Very robust panel ensuring suitable fixing points.



Exceptional edge fixing with Nails, screws or staples.



Resistant to mould and insects, will not encourage mould growth or vermin.



High impact resistant, able to withstand surface impacts.



Breathable, ensuring a healthy environment that naturally absorbs and releases moisture.

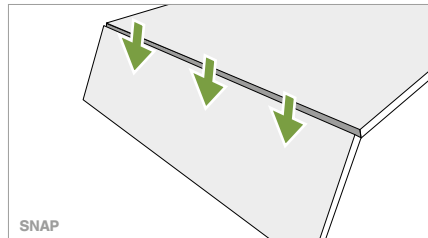
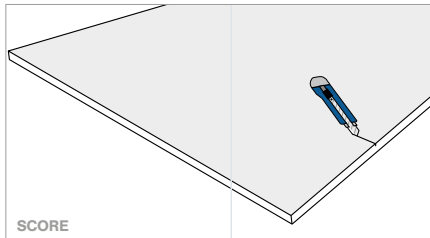
1. Euro Class A1, BS EN ISO 1182, BS EN 1716, BS EN 476 Class 0 surface spread of flame, BS EN 476 (Part 22).

# FIRESURE 2440 X 1220 X 10MM A1 NON-COMBUSTIBLE BOARD



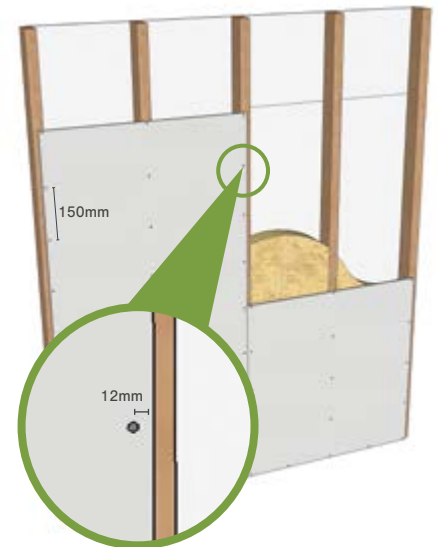
## Cutting

Firesure can be easily cut to size on site using the score and snap method. Using a pencil, mark the required size and score along the pencil line using a utility knife and straight edge ensuring you cut through the reinforcing mesh.



## Fixings

- ▶ Timber Frame, stainless steel wood screws or nails are recommended.
- ▶ Timber Stud, stainless steel woodscrews or self tapping screw with countersunk head.
- ▶ Metal Stud, case hardened stainless steel or self tapping screw with countersunk head.
- ▶ Stainless steel screws are recommended for use in all applications.



## Board attributes comparison

Attributes	Meyer FireSure	Gypsum Board	Plywood /OSB	Cement Board
Fire Resistant	Yes	Yes	Yes	Yes
Non-Combustible	Yes	X	X	Yes
Water & Moisture Resistant	Yes	X	X	Yes
Mould & Mildew Free	Yes	X	X	Yes
Insect Resistant	Yes	X	X	Yes
Nail pull resistance	Yes	Yes	Yes	Yes
Cut/Saw – No special tools	Yes	Yes	Yes	X
Wallpaper over	Yes	Yes	X	X
Paint over	Yes	Yes	Yes	Yes
Tile Backer	Yes	X	X	Yes
Insulation Sound & Heat	Yes	X	X	Yes
Strong & Durable	Yes	X	Yes	Yes
Lightweight	Yes	Yes	Yes	X
Recyclable	Yes	X	X	X

## Firesure Applications

- ▶ Passive fire protection for walls
- ▶ Fire resistant stud partitions, ceilings, floors & fire doors
- ▶ Volumetric or modular pods
- ▶ Non-combustible sheathing & infill boards
- ▶ Sandwich panels
- ▶ Fire safe OSM for timber frame
- ▶ Soffit linings
- ▶ Tile backer
- ▶ Column Fire protection
- ▶ Open or closed cell timber frame and SIPS sheathing
- ▶ Boiler / woodburner backing board
- ▶ Prison buildings & anti-vandal units
- ▶ Render boarding
- ▶ Lift shaft lining
- ▶ Door linings
- ▶ All applications requiring non-combustible boards

### TILBURY

44 Berth, Tilbury,  
Essex, RM18 7HP  
Phone: 0844 391 4211  
Sales.tilbury@meyertimber.com

### CHIPPENHAM

Meyer House, Vincients Road,  
Chippenham, SN14 6NQ  
Phone: 0844 391 4144  
Sales.chippenham@meyertimber.com

### STOKE ON TRENT

Hadleigh Park, Grindley Lane,  
Blythe Bridge, ST11 9LW  
Phone: 0845 873 5000  
Sales.stoke@meyertimber.com

### GRANGEMOUTH

Central Dock Road, Port of  
Grangemouth, FK3 8UE  
Phone: 01324 484 488  
sales.grangemouth@meyertimber.com